



OneFile

TRAINING & ASSESSMENT EPORTFOLIO

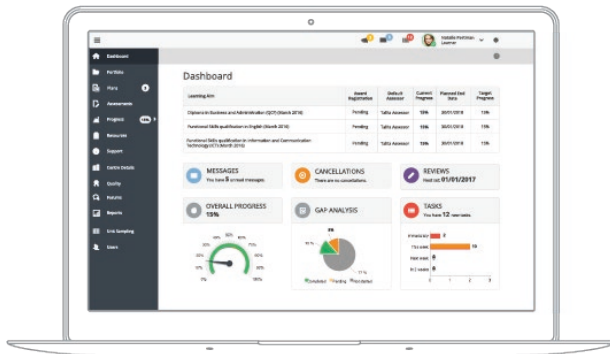
Most advanced · Most reliable · Most endorsed · Most secure · Most used

PERFECT FOR APPRENTICESHIPS, QCF, NVQ,
BTEC AND ALL CRITERIA-BASED QUALIFICATIONS

ENDORSEMENTS



ACHIEVE OUTSTANDING AUDITS



Manage all of your training and assessment needs
in one paperless system.

OneFile is a user-friendly eportfolio designed to make
life easier for the education and training sector.

What's more, our software is developed by a team of
former assessors, so you can be confident we have
the expertise to support your delivery.

PLAN

assessments
for learners



ASSESS

learner work
in eportfolio



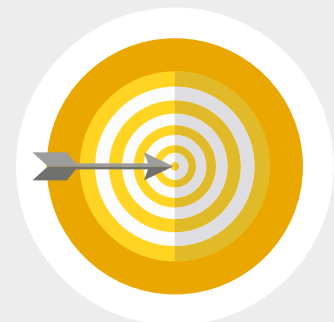
REVIEW

with detailed
reports



ACHIEVE

with engaged
learners





Dashboard

Learning Aim				
Diploma in Business and Administration (QCF) (March 2018)	Pending	Taliah Asessor	15%	30/01/2018
Diploma in Business and Administration (QCF) (March 2018)	Pending	Taliah Asessor	15%	30/01/2018
Functional Skills qualification in English (March 2018)	Pending	Taliah Asessor	15%	30/01/2018
Functional Skills qualification in Information and Communication Technology (ICT) (March 2018)	Pending	Taliah Asessor	15%	30/01/2018

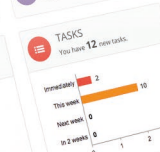
MESSAGES
You have 5 unread messages.



CANCELLATIONS
There are no cancellations.



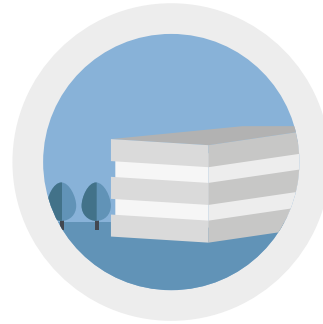
REVIEWS
Next set: 01/01/2017



ONEFILE FOR ALL



COLLEGES



IN-HOUSE TRAINING



PUBLIC SERVICES



TRAINING PROVIDERS

WHY ONEFILE

Choose the leading eportfolio with 99.6% uptime for a future filled with success.

✓ **AGE AND BEAUTY**

Intuitive interface and features, our software has been perfected over 10 years of development.

✓ **UNLIMITED MEDIA STORAGE**

No cap on the number of files you can upload.

✓ **ENDORSED BY MULTIPLE
AWARDING BODIES**

Trusted and approved by all major awarding bodies.

✓ **ROBUST ELECTRONIC SIGNATURES**

Comply with all standard codes of practice.

✓ **DATA STORED ON ENCRYPTED SERVERS
HOSTED IN THE UK**

Hard drives encrypted to AES-256bit standard.

✓ **DATA BACKED UP EVERY 15 MINUTES
WITH DISASTER RECOVERY FOR 90 DAYS**

Our database is backed up in full every 24 hours, and incrementally every 15 minutes.

✓ **DEDICATED ACCOUNT MANAGER**

Make the most of our Account Managers, all experienced vocational training experts.

✓ **MOST USED, MOST LOVED**

Join our community and embrace our sharing best practice and network events.



BENEFITS



CUT COSTS & SAVE MONEY

Save 75% on materials and travel costs.



INCREASE ASSESSOR CASELOADS

Free up assessor time and increase their caseload capacity by 50%.



ENCOURAGE & MOTIVATE LEARNERS

Motivate learners through technology with live progress dashboards.



TIMELY COMPLETIONS

With online access, learners can work independently anytime, anywhere.



BETTER ACHIEVEMENT RATES

Enhance the learning experience and improve retention rates and overall achievement.



IMPROVE COMMUNICATION

Feedback and messaging features enable strong and continuous engagement.

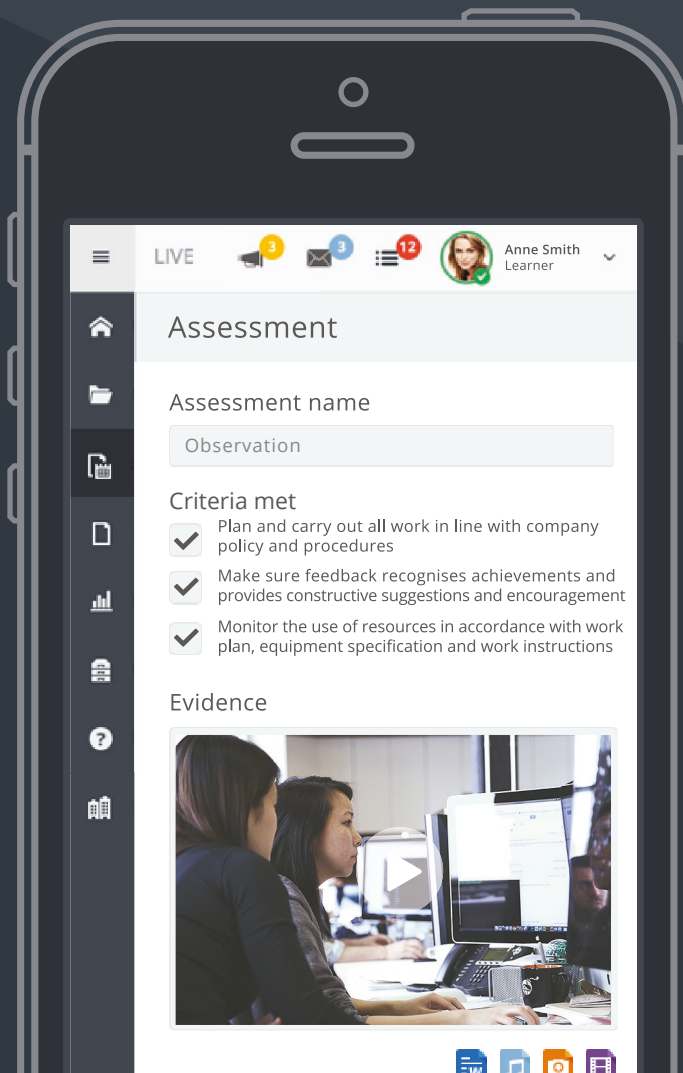


FEATURES

ONEFILE APP

OneFile's sophisticated app allows you to access your assessment portfolio on the go. Now you can plan, assess and review offline.

Engagement between assessors and learners is more streamlined than ever. Users can complete qualifications wherever, whenever and however they wish.



MORE FEATURES

- Online & offline plans, assessments & reviews
- MIS, VLE & initial assessment integration
- Annotated feedback
- Progress tracking & live reporting
- Individual dashboards
- Timesheets and portfolio journal
- Centre resources
- IQA Roles including Lead IQA
- Quality sampling tools & policies
- Standardisation rules
- NEW BTEC assessment workflow

FORM DESIGNER



OneFile's dedicated and exclusive form designer gives managers, directors and leaders the ability to:

- Design individual learning plans
- Modify assessment plans
- Customise the review process
- Set SMART targets for learners

CUSTOMER SERVICE

Our devoted team of experts are with you every step of the way. With OneFile, you get a dedicated account manager, friendly technical support, helpful data assistants and diligent in-house developers. Together we provide a service that works for you.

THE SERVICE

EXPERT ACCOUNT MANAGER

Assigned to each customer

GUARANTEED

10 day setup for new customers

IMPLEMENTATION

Support and guidance for 3 months

FREE TRAINING

Delivered online for all users

TECH SUPPORT

Available 8am-6pm, Monday to Friday

QUALIFICATIONS

Built and customised upon request

DATA BACKUP

Every 15 minutes to encrypted
servers hosted in the UK



CASE STUDY

Return on investment

By eradicating paper portfolios at £10 each, we are saving around £10k per month; and we're currently calculating our savings on postage and printing which is already running into tens of thousands per annum.

Since implementing OneFile we're now able to carry out remote visits which also creates substantial expense claim savings per learner visit. Based on the current number of monthly remote visits, we estimate annual savings of between £110k and £170k per year.

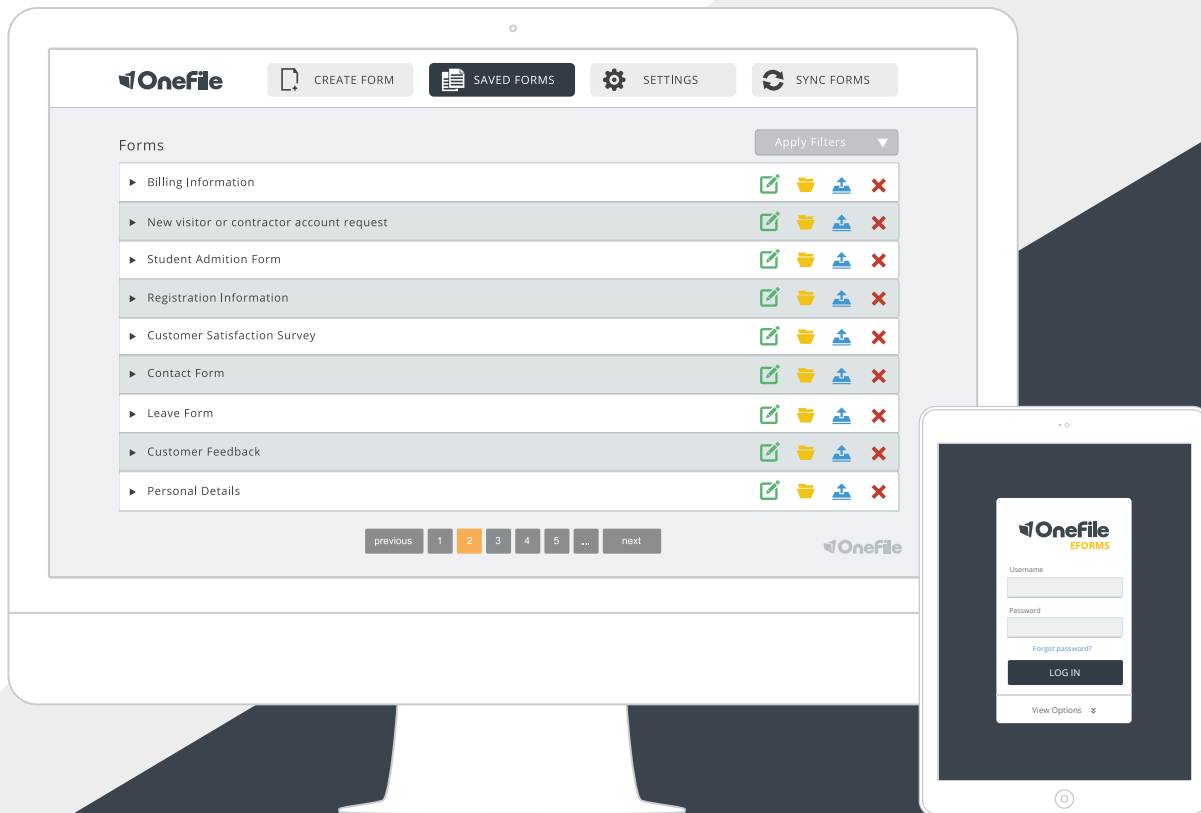
Wayne Lord | Corporate Services Director



ADD OFFLINE EFORMS

ELIMINATE DATA ENTRY

Use OneFile to enrol new learners, build eportfolios and replace all paper forms.





START SAVING

Get the most out of your resources with a paperless workplace.

Our customers have seen savings in paper, travel, print and postage as well as enhanced visibility and transparency at all levels. Here are some examples of the savings our customers have benefited from:

84% saved on printing

30 hours admin time saved per learner

750% return on investment

OUR PRICING

£35

per learner / per framework

Training and Assessment Eportfolio

- Implementation support
 - Technical support
 - Secure data hosting
 - Account management
 - Qualifications built

Setup **£500**

Form designer **£500**

*All prices exclude VAT. Discounts available for bulk purchases.

+44 (0) 161 638 3876 | www.onefile.co.uk | info@onefile.co.uk

USE ONEFILE TO SUPPORT FELTAG RECOMMENDATIONS

WHAT OUR CLIENTS THINK

“Choosing OneFile over other providers was an easy decision for many reasons; ease of use, references from users, the excellent sales process and the customer service support from our dedicated account manager.”

Tony Rankin | *Knowsley Community College*

“OneFile has improved the relationship between learners and assessors. Learners feel that the ability to receive feedback from their assessor quickly has helped them to improve their quality of work.”




Francesca Wyllie | *South Devon College*

OneFile

TRAINING & ASSESSMENT EPORTFOLIO

Onefile Ltd, One Central Park,
Northampton Road,
Manchester M40 5BP

+44 (0) 161 638 3876
www.onefile.co.uk
info@onefile.co.uk

 @OneFileUK
 facebook.com/OneFileUK
 youtube.com/OneFileUK